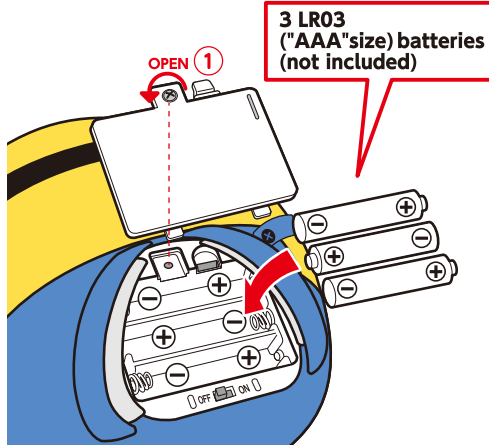
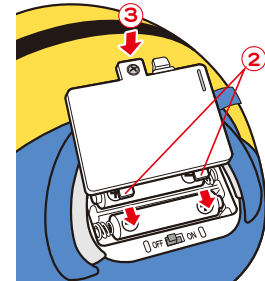


## How to place the batteries

- 1 The battery cover is on the back of the main unit. Loosen the screw with a screw driver and take off the cover by pressing down ① hook lever. Make sure you set the + and - polarity marking of the battery in the correct direction when placing the 3 LR03 ("AAA" size) batteries. Set the battery from the - polarity marking side.



- 2 Slide in the 2 parts of the cover in ②. Close ③ in the direction of the arrow and tighten the screw with a screw driver.



Do not use old and new batteries or different batteries together.

## How to play

- 1 Open the back and slide the switch to on! Minion will let you know when the power is on! (Please slide the switch to off when you finish playing.)
- 2 Talk to Minion or clap your hands and make sound! Minion walks and talks when you make sound!
- 3 After approximately 5 minutes of inactivity Minion automatically turns off. To play again slide the switch to off once and then to on.

